



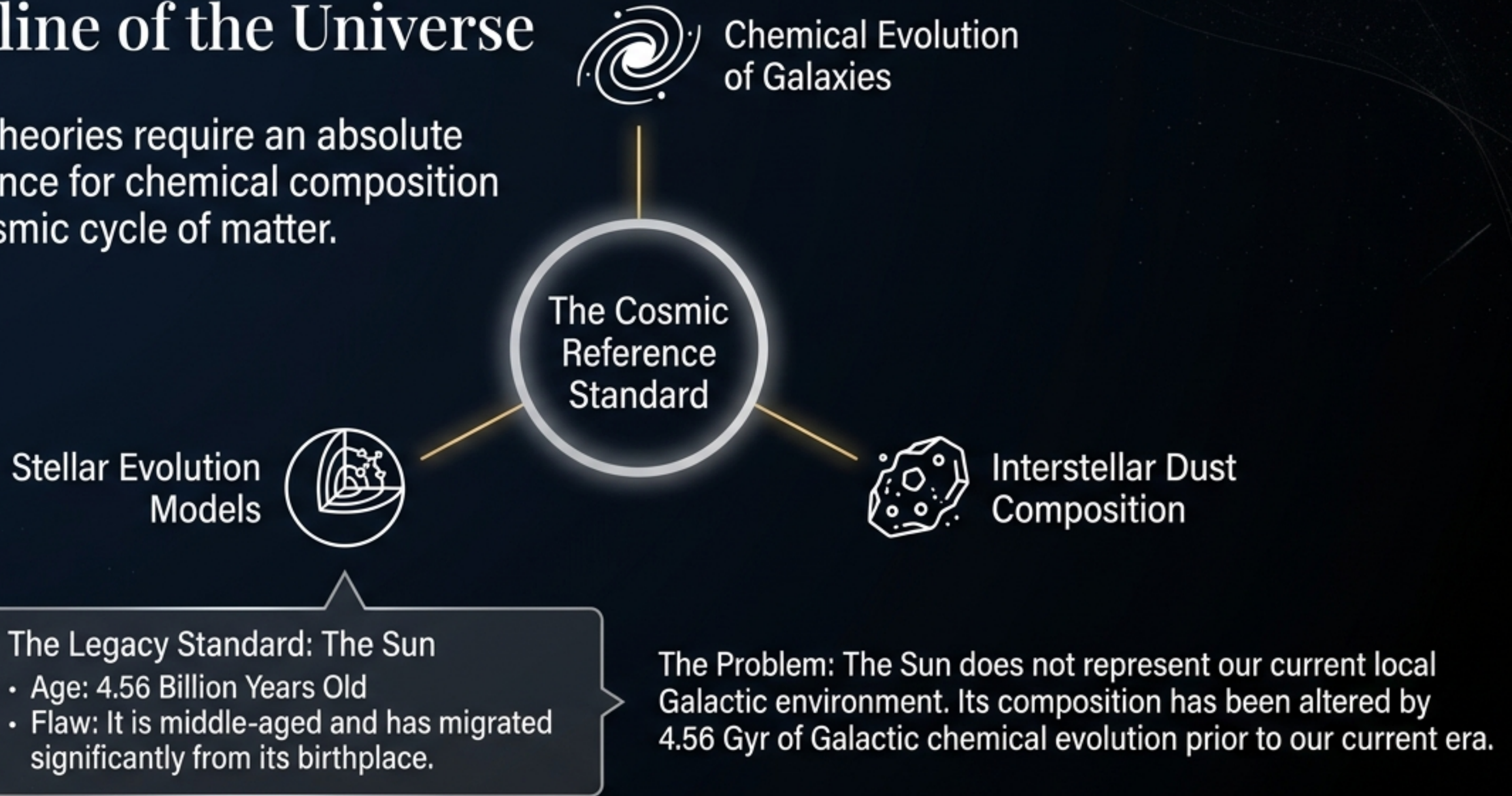
Present-Day Cosmic Abundances

Precision Spectroscopy and the Search for Cosmic Reference Standards

A comprehensive non-LTE study of nearby early B-type stars. M.-F. Nieva & N. Przybilla

The Baseline of the Universe

Astrophysical theories require an absolute baseline reference for chemical composition to track the cosmic cycle of matter.



What is the true present-day chemical reference for our local Galactic environment?

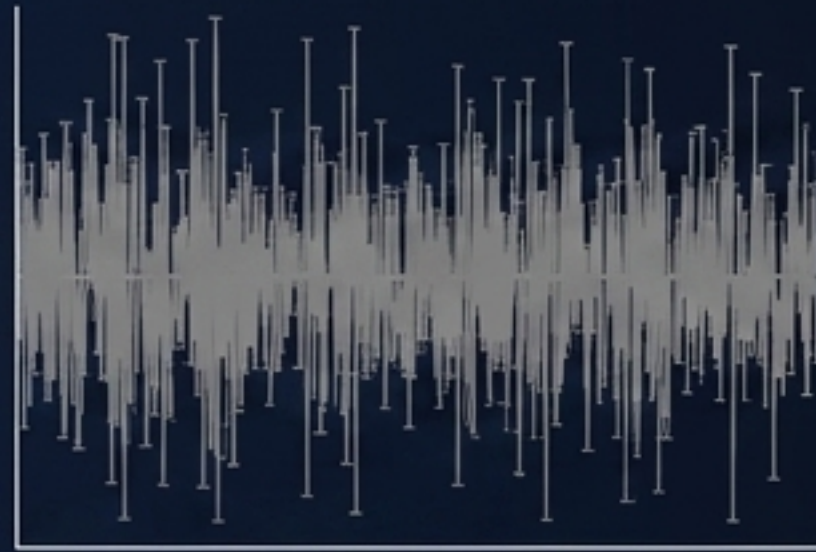
Isolating the Pristine Probe

	The Solar Standard	Interstellar Medium (ISM)	Early B-type Stars
Age	4.56 Gyr	Variable	~10 Million Years (Young)
Migration	Significant	N/A	Minimal (Near birthplace)
Dust Depletion	N/A	Highly Depleted	Unaffected
Pristine State	Altered over time	Hidden in dust grains	Fully Preserved (No strong stellar winds or convection)

Takeaway: Early B-type stars ($8-18 M_{\text{sun}}$) are short-lived, structurally stable, and remain near their birthplaces, making them uncontaminated probes of present-day cosmic matter.

The Historical Observational Challenge

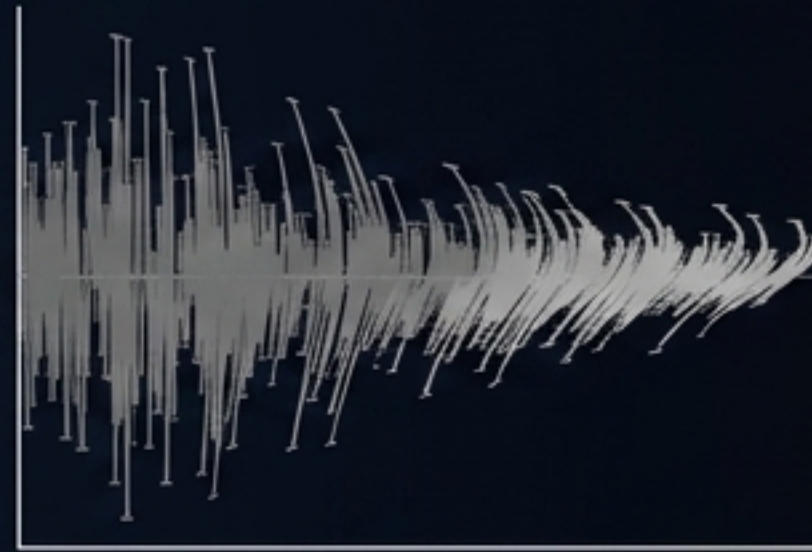
Despite their ideal physical nature, previous spectral analyses of main sequence B-stars produced widely inconsistent abundance determinations.



Phase 1: Noise

(Methodological Limitations)

- Reliance on Local Thermodynamic Equilibrium (LTE)
- Fragmented atomic data in non-LTE calculations



Phase 2: Bias

(Systematic Errors)

- Errors of 5-10% in effective temperature (T_{eff})
- Up to 25% error margins in surface gravity ($\log g$)



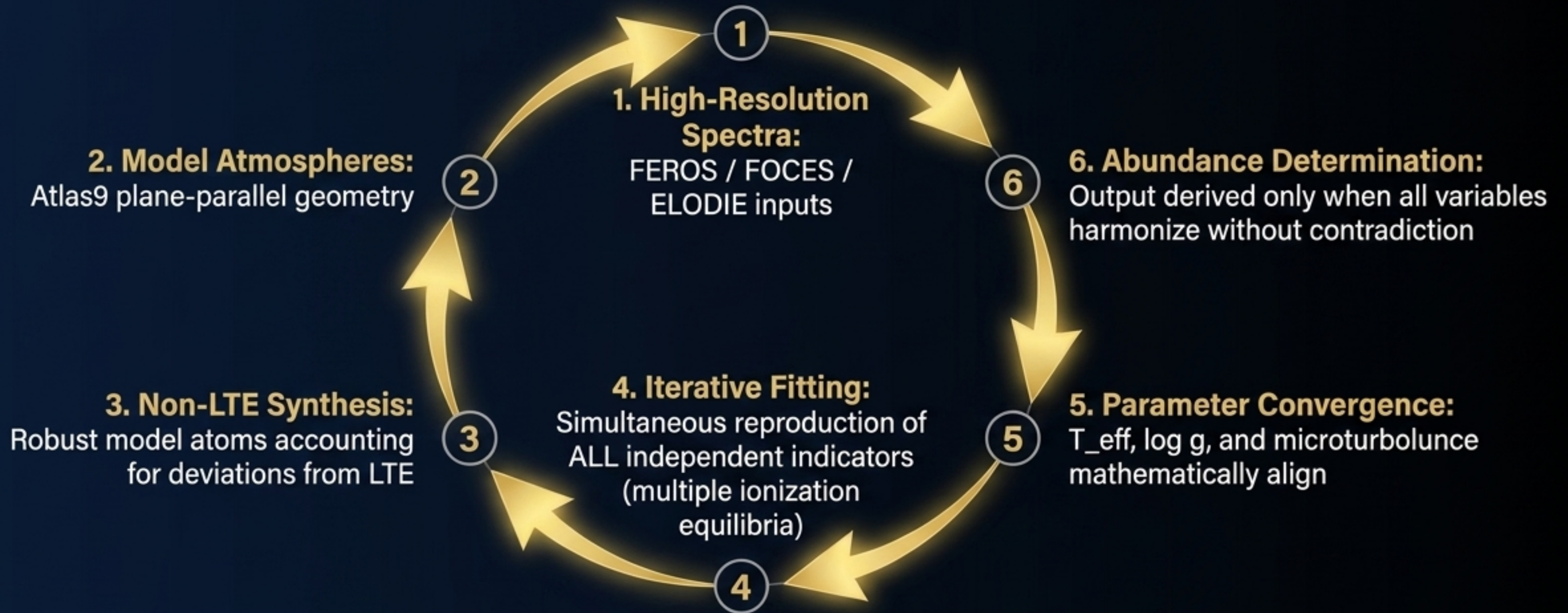
Phase 3: Scatter

(The Result)

- Elemental abundances skewed by a factor of 2.
- False Conclusion: Systematic uncertainties masked the true signal, leading to an artificial scatter and false assumptions of a metal-poor local neighborhood.

The Methodological Innovation

Self-Consistent Iterative non-LTE Analysis



Takeaway: A breakthrough in robustness. By forcing multiple independent data streams to agree simultaneously, the methodology moves from isolated assumptions to a mutually constraining, holistic system.

The Local Stellar Dataset

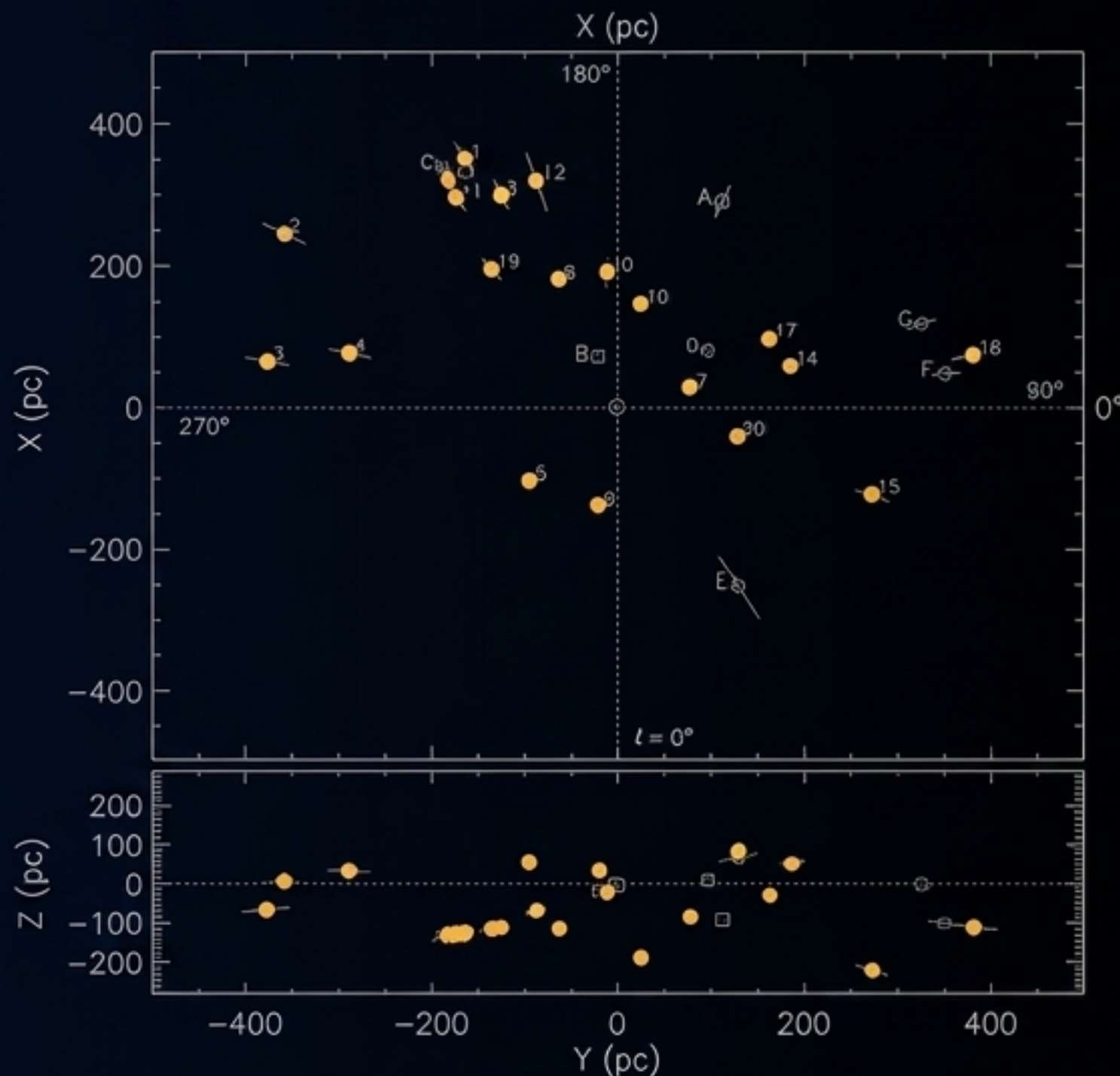
The Sample: 29 meticulously selected nearby early B-type stars situated within the solar neighborhood (<500 parsecs).

Instrumentation:

Spectra gathered via world-class spectrographs: FEROS, FOCES, and ELODIE.

Observational Quality Filters:

- Unprecedented Signal: High Signal-to-Noise ratio (S/N 250 to >800).
- High Resolution: $R = 40,000 - 48,000$.
- Unbiased: Strictly sharp-lined, single, chemically normal stars selected to eliminate observational bias from companions or peculiar abundances.

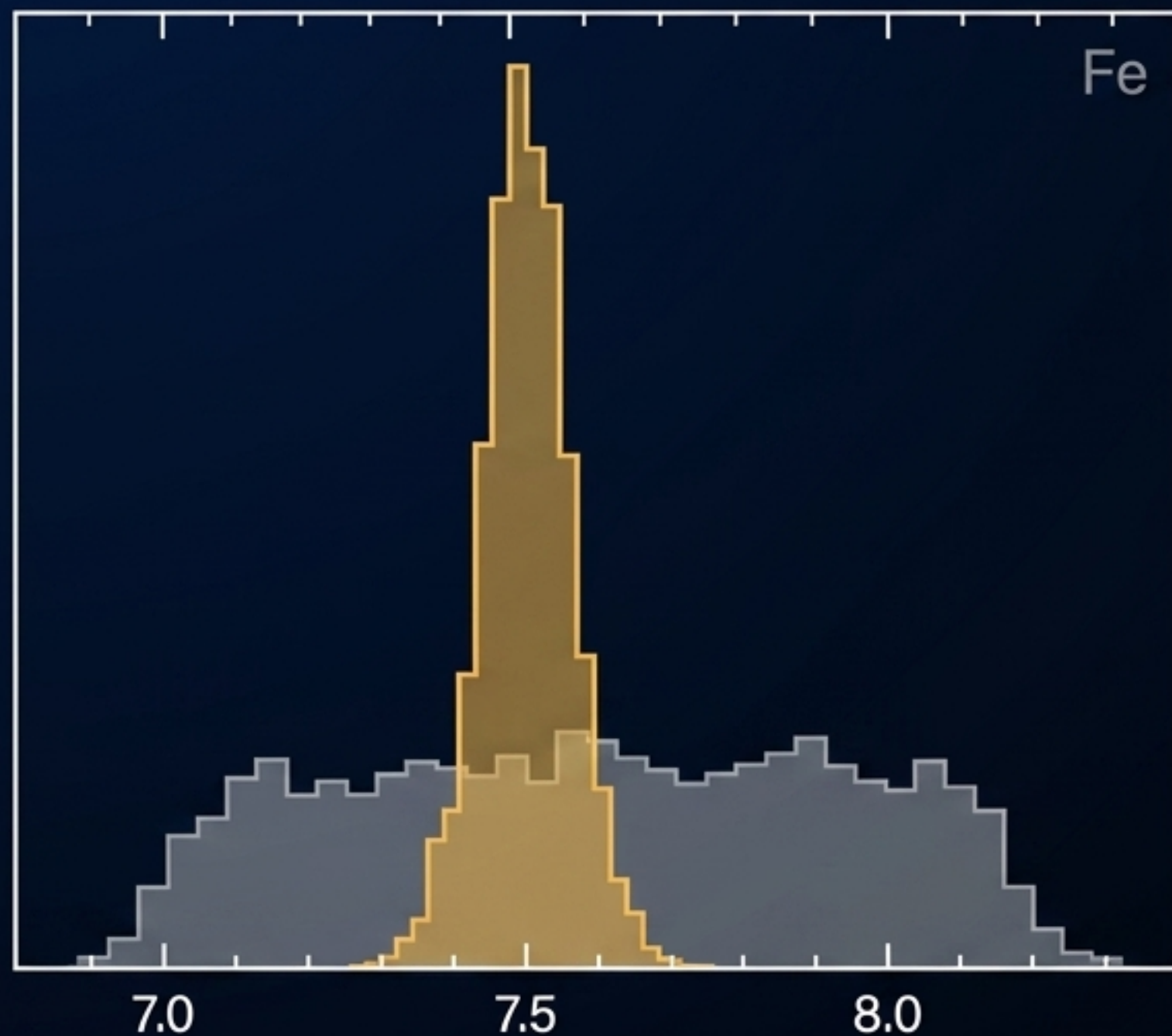


The Collapse of Systematic Uncertainty

Effective Temperature (T_{eff})	Previous: 5-10% error	Achieved: 1-2% precision
	Achieved: 1-2% precision	
Surface Gravity ($\log g$)	Previous: 25% error	Achieved: <15% precision
Elemental Abundances	Previous: Factor of 2 variance	Achieved: Better than 25% maximum uncertainty

Takeaway: The systematic uncertainty previously limiting astrophysical baselines is not merely reduced; it is essentially collapsed.

The Present-Day Cosmic Abundance Standard



The Revelation:

The local young stellar component is chemically homogeneous out to ~ 400 parsecs.

The Metric:

Abundance fluctuations for He, C, N, O, Ne, Mg, Si, and Fe are mathematically tight—varying by less than 10% around the mean.

Conclusion:

A chemically uniform local present-day cosmic standard conclusively exists. The historic discrepancy between gas-phase ISM and young stars is resolved.

Scientific Implications Across Astrophysics



Galactic Chemical Evolution: Provides a robust present-day endpoint to accurately anchor nucleosynthesis models.



Stellar Evolution: Establishes a new, lower initial metallicity baseline ($Z=0.014$) for massive star tracks, with CNO mixing following precise nuclear paths.



Interstellar Dust Constraints: Proves carbonaceous dust is destroyed in H II regions while silicates survive, fundamentally redefining grain models (graphite is a minority species).



Solar Migration Inference: Proves the Sun is an immigrant to our neighborhood; its differing C/O ratio confirms it migrated outward from the inner Galactic disk (born $\sim 5-6$ kpc from the center).

The Epistemology of Observation

How do we extract reliable knowledge from deeply complex systems?
This work demonstrates a universal framework:

1. Precision

Eliminating noise at the foundational data-gathering level through strict sample curation.

2. Redundancy of Indicators

Forcing multiple, entirely independent data streams to mathematically agree.

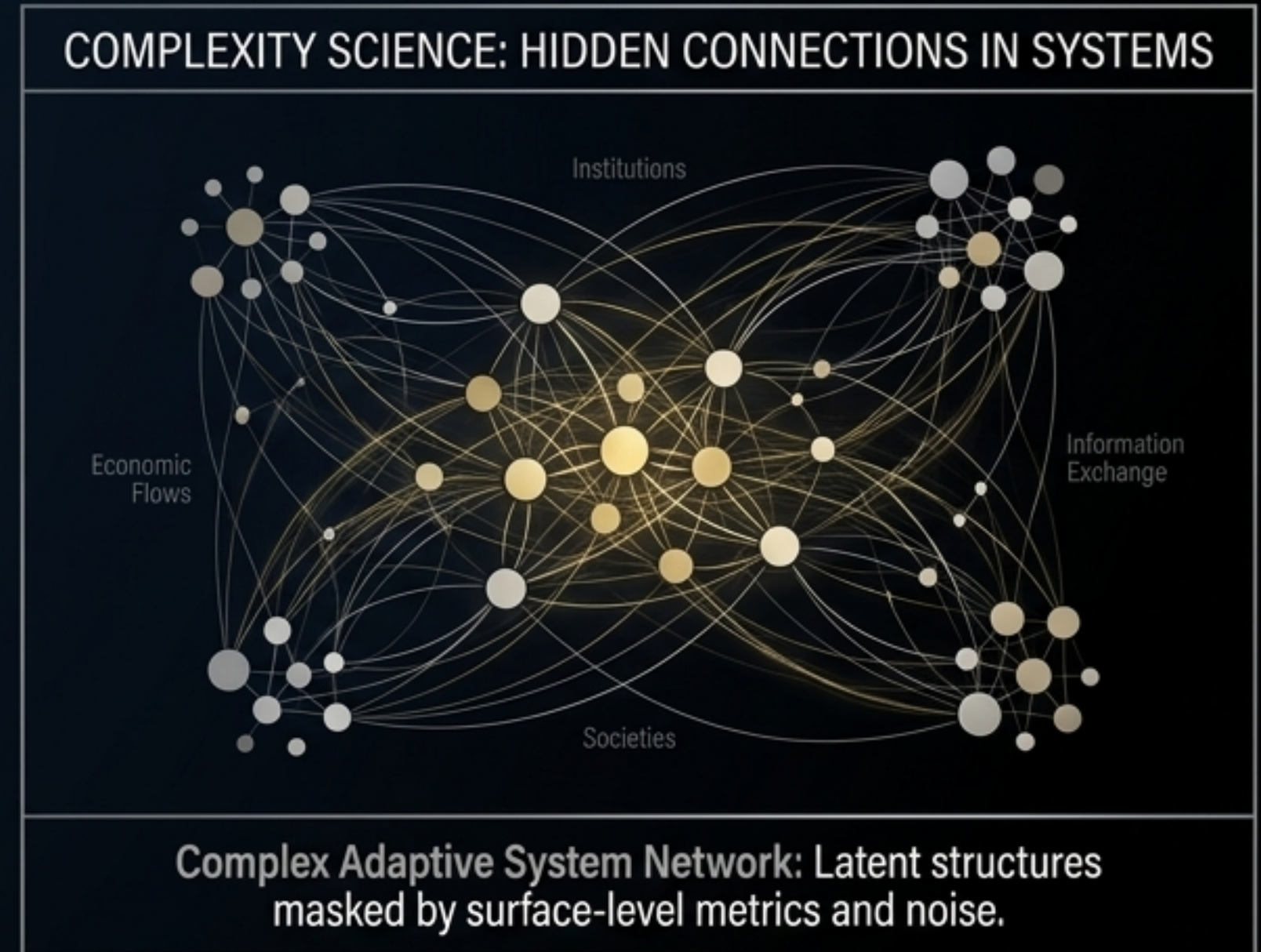
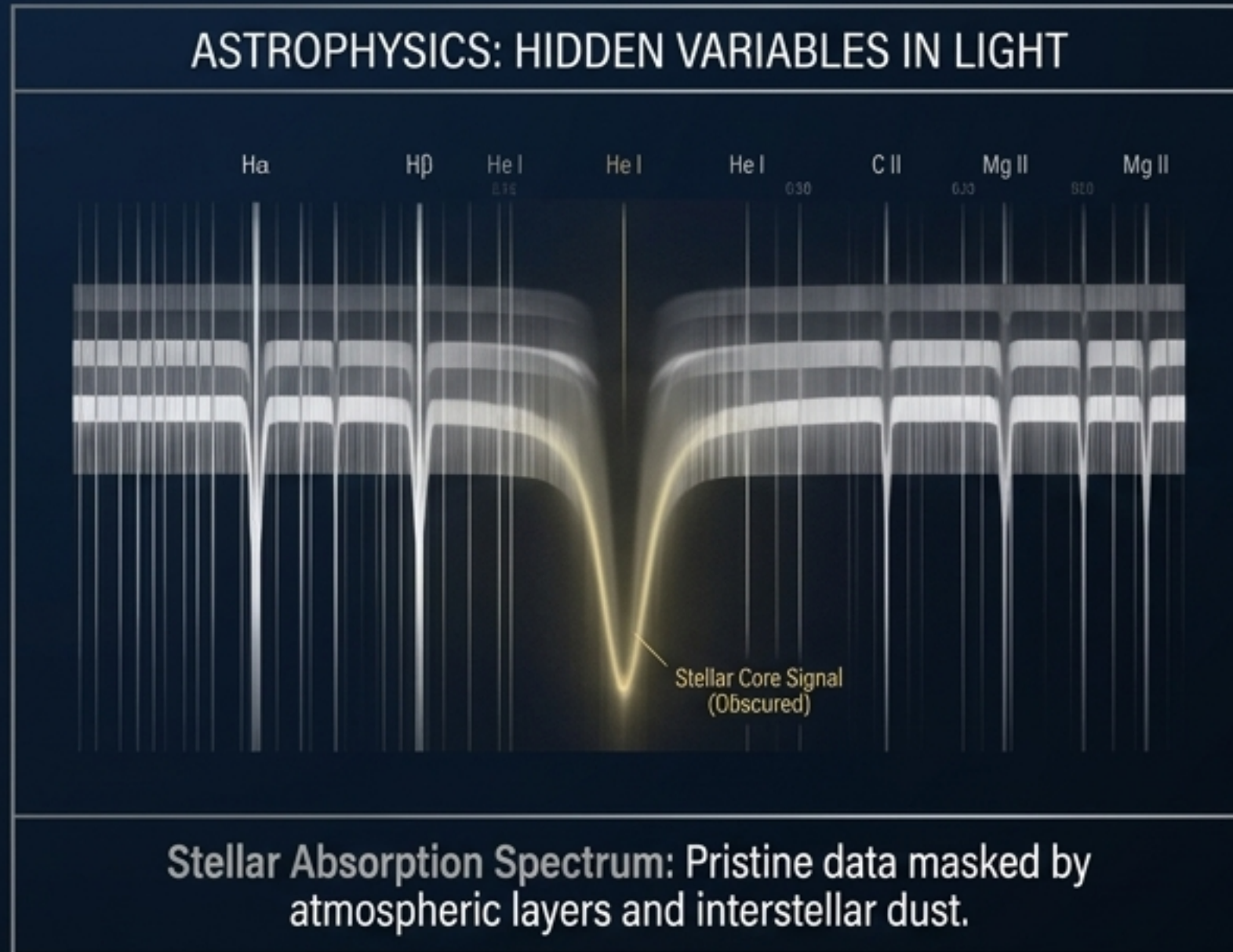
3. Iterative Inference

Allowing the model to continuously self-correct until all variables harmonize.

4. Self-Consistency Constraints

Truth emerges only when no single variable contradicts another.

From Astrophysics to Complexity Science



The Transferable Lesson: Observing complex systems requires inference far beyond immediate visibility.

- **Hidden Variables:** Just as atmospheric layers mask pristine stellar data, surface-level metrics mask the realities of complex adaptive systems.
- **Longitudinal Inference:** Using time-invariant properties to see past the noise of a system's current state.
- **Uncertainty-Aware Interpretation:** Methodologies must be designed to mathematically corner and collapse systematic bias, rather than merely measure it.

Legacy and Scientific Transfer

A Broader Research Trajectory

From the mastery of astrophysical precision spectroscopy...

...to the development of complexity-aware observation frameworks for massive, interdisciplinary human systems.

Scientific rigor in observation is a universal standard. The same methodological precision required to distill the true composition of the cosmos can—and must—be deployed to illuminate the hidden realities of our own complex institutions.